

# ICIS™ Mobile

## INTEGRATED CLINICAL INFORMATION SYSTEM FOR SMARTPHONES, PDAS AND HANDHELD MOBILE DEVICES

ICIS MOBILE is a new breed of medical information integration platform that captures and combines critical patient information from a broad range of hospital systems and equipment and presents it on your smartphone or PDA via wireless and mobile phone networks

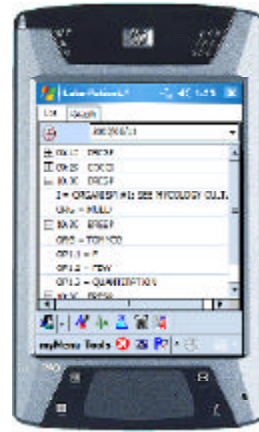
### PATIENT INFORMATION AT YOUR FINGERTIPS

No more wasting time searching and collecting patient information. ICIS places all your clinical information—labs, notes, demographics, X-rays, CT Scans, and even real time vitals—all in the palm of your hand.

Better yet, you choose the information that's displayed and can customize what you see for each patient in your care.



PocketPACS



Clinical Labs



Realtime Vitals

### ICIS Mobile Modules

With ICIS Mobile you spend less time hunting and gathering information and more time caring for patients.

### BRIDGE INFORMATION ISLANDS

Forget vendor lock-in, incompatible systems and “information islands.” ICIS is platform and manufacturer-independent and will fit into virtually any hospital IT environment.

ICIS' unique modular architecture and broad range of vendor integrations allows it to interoperate with hundreds of hospital informatics,

digital information and patient monitoring systems—even ones notorious for “not playing nice” with other systems.

### ACCESS WHEREVER YOU ARE

With ICIS Mobile you have up-to-the-minute access to your clinical patient information from literally anywhere. All you need is a wireless Internet or high-speed cellular connection.

From your home, in your office, or on the road, all of your patients' most current information is never more than a tap or two away.

### ICIS MOBILE FEATURES

- **Manufacturer & Platform Independent**—Connects to hundreds of hospital systems. No more vendor lock-in, system incompatibilities or “information islands”
- **Modular Architecture**—Pick just the integration features you want now and still be quickly able to add new ones later
- **Easy Integration**—Up and running in days or weeks, not months
- **Mobile Access**—Access patient data from the office, on the road or anywhere else with Internet or high speed cellular access
- **Realtime Information**—All patient information is delivered in realtime—even when connecting from outside the facility.
- **Interoperates with ICIS Dashboard**—ICIS Mobile is 100% compatible with the ICIS Dashboard PC-based clinical information system. Setup patient views at your office or the hospital with ICIS Dashboard, see the same information on your smartphone when you're travelling.

### LOWER COSTS, BETTER CARE

ICIS Mobile's ability to provide fast and easy access to up-to-date clinical information lets doctors make better decisions regarding patient care, reduces errors and shortens patient hospital stays. That not only saves time and money for everyone, but more importantly, it can save lives.

## ICIS INTEGRATION MODULES

One of ICIS' most significant features is modular architecture which allows you to add new functionality and data integrations to the system without disrupting current operations. ICIS "plug-and-play" functionality means you can easily customize the system to fit your facilities' needs immediately and then continue to add new features as your users and operations require.

### ELECTRONIC MEDICAL RECORDS (ADT)

Access to patient demographics, history and physical evaluations, consultation notes, radiology reports, and laboratory reports. HL7 compatible.

### REALTIME VITALS

The Realtime Vitals Monitoring module provides physicians with the ability to remotely view vital sign data from any networked bedside patient monitor in near real time. This module provides several data viewing modes including:

### CLINICAL NOTES / ROUNDING LISTS

Save physicians up to 70% of their time by automatically assembling results, reports, laboratory findings, and scan evaluations and building standard daily notes.

### POCKETPACS

the PocketPACS module allows you to use your handheld to view and manipulate diagnostic quality images such as chest X-rays, bone X-rays, CT scans, MRI scans, and virtually any other medical imaging modality.

### CLINICAL LABS

Provides real time clinical results. Automatically generates trends of laboratory parameters to allow physicians to anticipate adverse changes in patient status.

### CUSTOM MODULES & INTEGRATIONS

Our Integration Services Group have an extensive set of tools and techniques that enable them to develop custom modules specifically for your facility.

## BASE SYSTEM REQUIREMENTS

### ICIS SQL SERVER

2.0Ghz or better CPU  
2GB or more of RAM  
(1) 30GB SCSI hard drive for OS and logging  
(1) 150GB SCSI hard drive for Data  
24X IDE CD-ROM

### ICIS PACS SERVER

2.0Ghz or better CPU  
2GB or more of RAM  
- 30GB SCSI hard drive for OS and logging  
- 300GB SCSI hard drive for Data  
24X IDE CD-ROM

### ICIS MEDS SERVER

2.0Ghz or better CPU  
2GB or more of RAM  
(1) 50GB SCSI hard drive for OS  
24X IDE CD-ROM

### ICIS MONACQ SERVERS

2.0Ghz or better CPU  
1GB or more of RAM  
(1) 50GB SCSI hard drive for OS  
24X IDE CD-ROM

### ICIS HL7 SERVERS

2.0Ghz or better CPU  
2GB or more of RAM  
(1) 50GB SCSI hard drive for OS  
24X IDE CD-ROM

### POCKET PC DEVICES

32MB or more of RAM  
32MB or more of ROM  
802.11WIFI or EVDO Cellular access  
PocketPC 2003 or Windows Mobile



global care quest

65 Enterprise, Suite 430, Aliso Viejo, CA 92656  
tel: 949.330.7450  
fax: 949.330.7451  
www.globalcarequest.com

Try it for yourself  
Download free demo  
version of ICIS at:  
[www.globalcarequest.com](http://www.globalcarequest.com)